

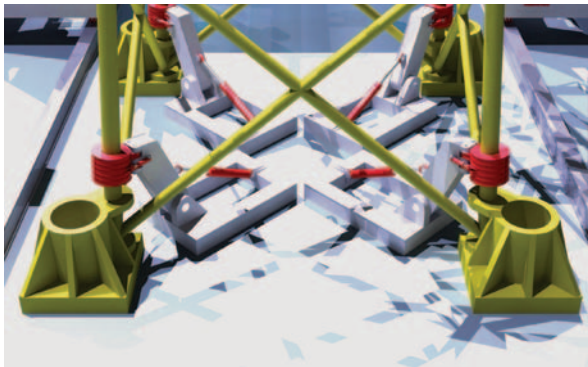
IHC Merwede Offshore Wind Vessels Jacket Installation



Project Concept Offshore Wind Vessels Jacket Installation System

Typical Dimensions

Overall Length:	120.0 m
Beam:	60.0 m
Lifting Capacity:	1260 t
Multifall Winches:	4 x 70 t



Description

This system provides a stable, cost effective and efficient means of installing jacket foundations for future offshore wind farms.

This floating system is independent of water depth and seabed conditions so avoids the need for time consuming jacking operations. Installation of jacket piles is achieved by the use of an onboard mobile crane. In the present configuration the concept allows the load out of 4 jackets simultaneously.

To allow rapid mobilisation and deployment the jackets are secured to the vessel using hydraulic seafastenings, and are transferred to and from their stowage positions by two mobile lifting gantries. Gantry movement is achieved using standard skidding units.

Offshore Wind Vessels Jacket Installation

Benefits

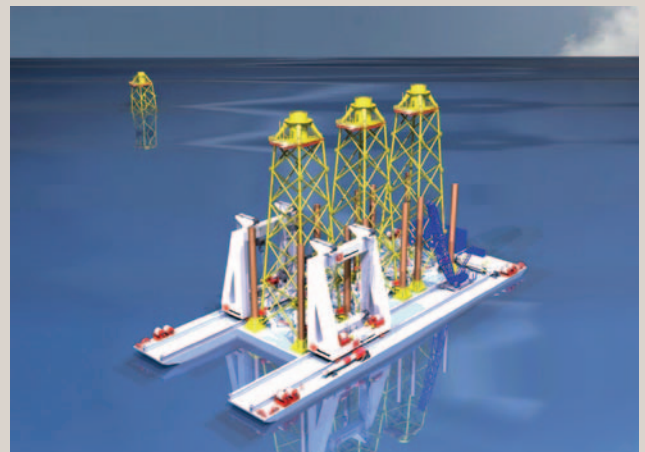
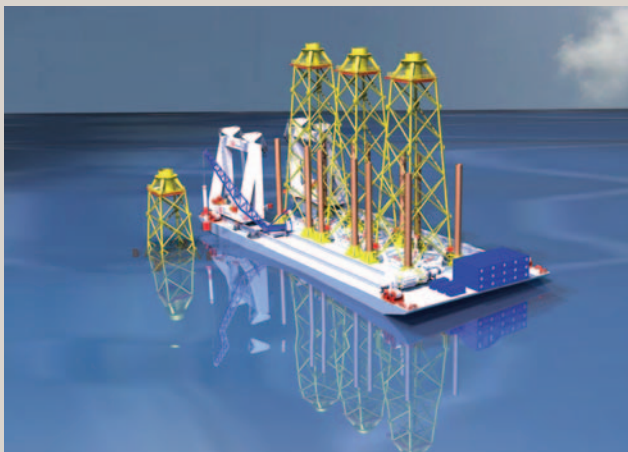
The system provides the end user with the following benefits:

- Transport and installation of multiple foundations in one sailing
- Increased operational weather window due to robust lifting systems and gantry structure
- Suitable for use with largest jackets currently used in offshore wind
- Reduction in installation time and costs

Installation Spread

Design and production of IHC vessels is conducted by Vuyk Engineering Rotterdam and IHC Merwede. The following specialist equipment is provided by IHC companies such as IHC Engineering Business Ltd, IHC Offshore Systems, IHC Hytop, and IHC Handling Systems for this vessel concept.

- Mobile lifting system
- Hydraulic seafastening system
- Piling hammers
- Pile handling equipment



IHC Engineering Business Ltd

Broomhaugh House
Riding Mill, Northumberland
NE44 6EG
England

Phone +44 (0) 1434 682 800
E-mail team@engb.com
Website www.engb.com

IHC Merwede Offshore & Marine

Rivierdijk 586, 3371 ED Hardinxveld-Giessendam
Po Box 5, 3370 AA Hardinxveld-Giessendam
The Netherlands

Phone +31 184 677 300
Fax +31 184 677 301
E-mail shipyard.mws@ihcmerwede.com
Website www.merwede.com